

Maximum Decubitus and Tissue Trauma Protection in your O.R.
Clinically proven Action® O.R. Pads & Positioners

ACTION®

Body Smart® Solutions



www.actionproducts.com

PRESERVE SKIN INTEGRITY IN YOUR HOSPITAL

Use **Action®** products, made from exclusive **Akton®** polymer

Benefits of Action® brand products

360° STRETCH FILM
LARGEST PRODUCT SELECTION
CONSTANT TISSUE SUPPORT

TOLL FREE NURSE
ADVICE LINE

WILL NOT SUPPORT BACTERIAL GROWTH

CLINICALLY PROVEN

IMAGING COMPATIBLE
FAST AND EASY
CLEANING

LATEX FREE
FREE POSITIONING
EDUCATION

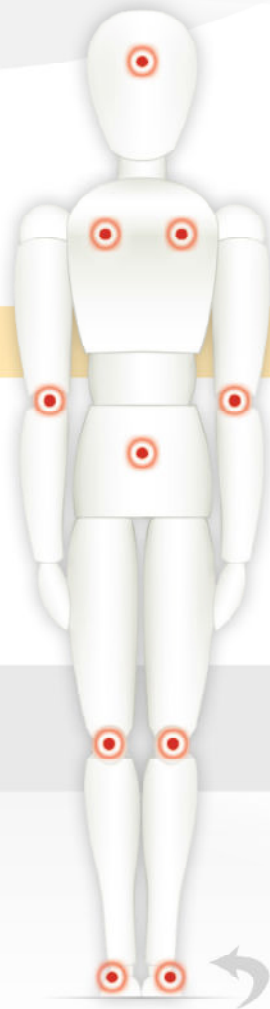
DEHP FREE
COST EFFECTIVE

ENVIRONMENTALLY PREFERRED PRODUCT (EPP)

RADIOLUCENT
REPAIRABLE
IF PUNCTURED

DOES NOT LEAK OR FLOW
CUSTOM MANUFACTURING AVAILABLE

BIOCOMPATIBLE
TISSUE EQUIVALENT

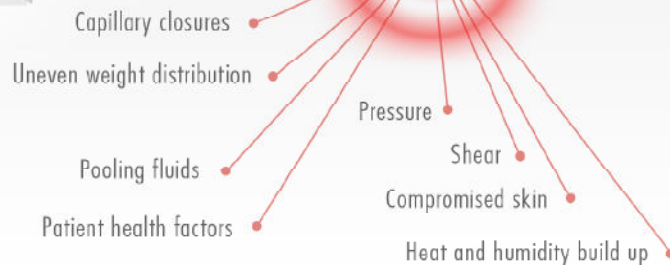


Look for authentic Akton® polymer

Ask for your sample today by contacting our customer service department at service@actionproducts.com



FACTORS CONTRIBUTING TO PRESSURE ULCERS:



Look for this symbol at the bottom of each page identifying the pressure ulcer areas our products support.

Pillowcase



Fitted

Disposable Overlay Covers

Pillowcase Style

40102 Fits table pad model 40101 Case of 25

Fitted Sheet Style

40800 Fits table pad model 40100 Case of 25

40801 Fits table pad model 40101 Case of 25

40803 Fits table pad model 40103 Case of 25

40804 Fits table pad model 40104 3 Pc Set

40805 Fits table pad model 40105 Each



Hourglass Hand Table Overlay

40330 32 x 24 x 16 x ½" 81.3 x 61 x 40.6 x 1.2 cm



Mayo Stand Cover

40717 21 x 18 ½ x ¾" 53.3 x 47 x 1.6 cm



Resurfacing Kits

Quick and easy resurfacing of minor cuts or abrasions on any polymer surface.

KIT002 4 x 4" 10 x 10 cm

KIT003 36 x 4" 91.4 x 10 cm



Full Length, Medium, & Small Overlays

Overlay, 3-Piece Set

Overlay with Perineal Cutout

40105	Small	20 x 20 x ½"	50.8 x 50.8 x 1.3 cm	<input type="checkbox"/>
40100	Medium	46 x 20 x ½"	117 x 50 x 1.3 cm	<input type="checkbox"/>
40101	Full Length	72 x 20 x ½"	183 x 50 x 1.3 cm	<input type="checkbox"/>
40103	Perineal Cutout	46 x 20 x ½" w/ cutout	117 x 50.8 x 1.3 cm w/ cutout	
40104	3-piece Set	See A, B and C		
40104A	Head	9 x 20 x ½"	22.9 x 50.8 x 1.3 cm	
40104B	Torso, w/ perineal cutout	39 ½ x 20 x ½"	100.3 x 50.8 x 1.3 cm	
40104C	Foot, w/ perineal cutout	20 x 20 x ½"	50.8 x 50.8 x 1.3 cm	

Universal Spot Protectors



- Adaptive use padding options for those hard-to-protect areas unique to each patient
- Designed to enhance pressure redistribution and improve shear performance

40405 Mini 1 ¾ OD x ¼" 4.1 OD x .6 cm Pkg of 12

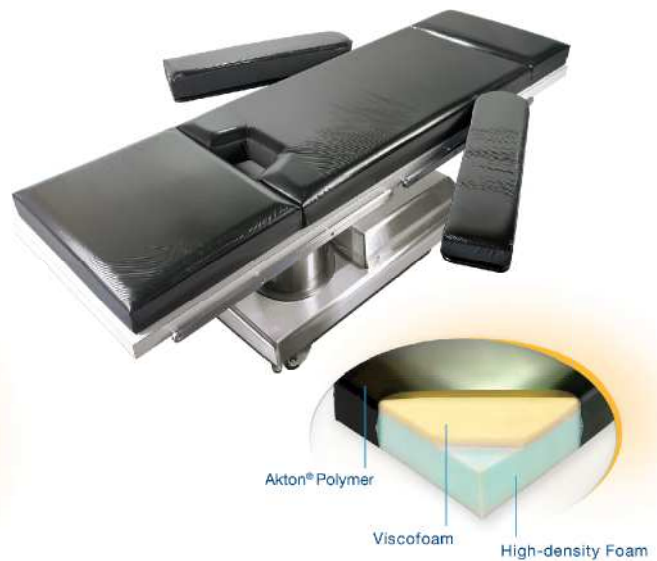
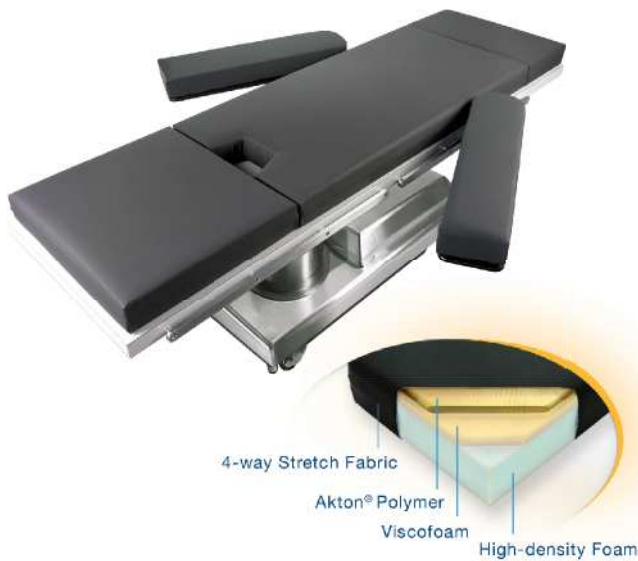
40406 Small 3 ¼ OD x ¼" 8.3 OD x .6 cm Pkg of 12

40407 Large 5 ½ OD x ¼" 14 OD x .6 cm Pkg of 6



- VALUE product essential for any operating room.

REPLACEMENT TABLE PADS



Performance Series

Head-to-toe pressure management, perfect for extended cases

- 4-way stretch fabric top provides pressure and shear management
- Continuous layer of exclusive Akton® viscoelastic polymer maximizes pressure redistribution and prevents capillary closure
- Soft viscofoam mid-layer enhances patient envelopment and comfort
- Superior infection control design
- High-density foam base maximizes stability

Performance Plus Series

The Performance Plus Series provides all of the pressure management features of the Performance Series- **PLUS** the added benefit of:

- Exposed Akton® polymer surface provides a shear benefit that is unparalleled in the industry
- Exclusive soft, 360° multi-directional stretch film cover preserves skin integrity
- Redistribution of heat to prevent “hot spots” which can become a catalyst for decubiti
- Repairable polymer top
- Clinical studies recommend a viscoelastic polymer overlay atop foam pads for effective pressure redistribution*

Models	Performance	Performance	Performance Plus	Performance Plus
	2 3/8" 3-pc. Set	3 3/8" 3-pc. Set	2 3/8" 3-pc. Set	3 3/8" 3-pc. Set
Berchtold B710, B810	55920	57920	50920	52920
Skytron 3100	55340	57340	50340	52340
Skytron 3500	55310	57310	50310	52310
Skytron 3501, 3600, 3600B	55370	57370	50370	52370
Skytron 6300, 6302	55350	57350	50350	52350
Skytron 5001, 6001, 6002, 6500 & 6600	55320	57320	50320	52320
Skytron 6700, 6701	55330	57330	50330	52330
Amsco 1080, 2080	55110	57110	50110	52110
Amsco 3080, 3085	55120	57120	50120	52120
Steris C-Max, 4085, 5085	55140	57140	50140	52140

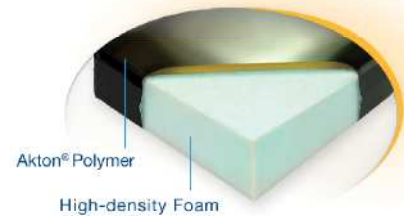
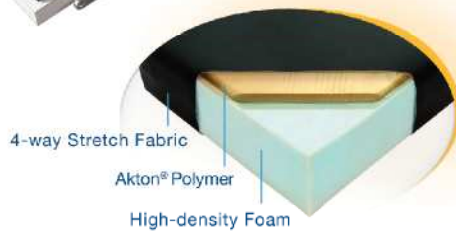
Don't see what you are looking for...

Call customer service for additional sizes or email service@actionproducts.com.



*AORN Recommended Practices for Positioning the Patient in the Perioperative Setting, 2015, p. 563-source from Research in Nursing Health, 1994, 17, p. 337. Intraoperative Pressure Sore Prevention: An Analysis of Bedding Materials, Thomas Johnson Study

REPLACEMENT TABLE PADS



Original FT Series ▼

Pressure management with our frame friendly, infection control design

- Value pad designed for a budget-driven facility
- 4-way stretch fabric top provides pressure and shear management
- Continuous layer of exclusive Akton® viscoelastic polymer maximizes pressure redistribution and prevents capillary closure
- Superior infection control design
- High-density foam base maximizes stability

Original Series ▼

Flagship pad with upgraded infection control design

- Exposed Akton® polymer surface providing shear benefit that is unparalleled in the industry
- Exclusive soft, 360° multi-directional stretch film cover preserves skin integrity
- Redistribution of heat to prevent “hot spots” which can become a catalyst for decubiti
- Repairable polymer top
- Superior infection control design
- High-density foam base maximizes stability
- Clinical studies recommend a viscoelastic polymer overlay atop foam pad for effective pressure redistribution*

Models	2 3/8" Original FT-	3 3/8" Original FT-	2 3/8" Original	3 3/8" Original
	3-pc. Set	3-pc. Set	3-pc. Set	3-pc. Set
Berchtold B710, B810	75920	77920	70920	72920
Skytron 3100	75340	77340	70340	72340
Skytron 3500	75310	77310	70310	72310
Skytron 3501, 3600, 3600B	75370	77370	70370	72370
Skytron 6300, 6302	75350	77350	70350	72350
Skytron 5001, 6001, 6002, 6500 & 6600	75320	77320	70320	72320
Skytron 6700, 6701	75330	77330	70330	72330
Amsco 1080, 2080	75110	77110	70110	72110
Amsco 3080, 3085	75120	77120	70120	72120
Steris C-Max, 4085, 5085	75140	77140	70140	72140

Don't see what you are looking for...

Call customer service for additional sizes or email service@actionproducts.com.



▼ - VALUE product essential for any operating room.

REPLACEMENT TABLE / STRETCHER PADS

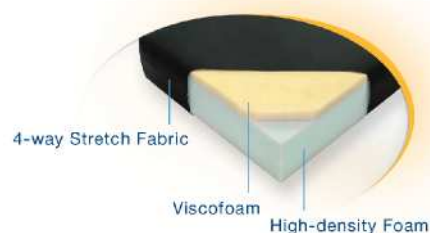


Angel Series Table Pads

Outstanding replacement pad for today's fiscally sensitive healthcare environment. Action® Angel series features superior infection control construction and good pressure and shear management performance. This is a Body Smart® and budget friendly alternative to the "basic table pad". It was engineered specifically for the dynamic, high turnover demands of the busy surgical suite without sacrificing patient care.

Models	2" 3-pc. Set	3" 3-pc. Set	4" 3-pc. Set
Berchtold B710, B810	60920	62920	65920
Skytron 3100	60340	62340	65340
Skytron 3500	60310	62310	65310
Skytron 3501, 3600, 3600B	60370	62370	65370
Skytron 6300, 6302	60350	62350	65350
Skytron 5001, 6001, 6002, 6500 & 6600	60320	62320	65320
Skytron 6700, 6701	60330	62330	65330
Amsco 1080, 2080	60110	62110	65110
Amsco 3080, 3085	60120	62120	65120
Steris C-Max, 4085, 5085	60140	62140	65140

Don't see what you are looking for...
Call customer service for additional sizes, or email service@actionproducts.com.



Perfect for:

- ASCs
- Higher turnover suites and procedures
- Use with existing Action® Overlays
- Comfort for non-anesthetized patient procedures
- Affordable upgrade alternative to the "basic" pad



Angel Series Stretcher Pads

Models	3" Stretcher	4" Stretcher
Universal 24 x 76	67124	68124
Universal 26 x 76	67126	68126
Universal 28 x 76	67128	68128
Universal 30 x 76	67130	68130



Flat



Contoured



Incline

Coordinating Armboard Pads

	2" Flat	3" Flat	4" Flat	5" Flat	2" Contoured	3" Contoured	4" Contoured	2" Incline	3" Incline
Performance Plus	54100	54600	54700	54000	54300	54800	54900	N/A	N/A
Performance	59100	59600	59700	59000	59300	59800	N/A	59150	59650
Original	74100	74600	N/A	N/A	N/A	N/A	N/A	N/A	N/A
Original FT	79100	79600	N/A	N/A	N/A	N/A	N/A	N/A	N/A
Angel	64100	64600	67100	N/A	64300	64800	67300	N/A	N/A

See pages 4-6 for table pad selection





Donut Head Pads V

40201	Adult	8 OD x 3 ID x 1 3/4"	20.5 OD x 7.5 ID x 4.5 cm
40212	Adult, High	8 OD x 3 ID x 3"	20.5 OD x 7.5 ID x 7.5 cm
40202	Pediatric	5 1/2 OD x 2 1/4 ID x 1 1/4"	14 OD x 5.7 ID x 3.2 cm
40203	Neo-Natal	3 1/4 OD x 1 1/2 ID x 3/4"	8.3 OD x 3.8 ID x 2 cm
40218	Adult, Wide	8 OD x 4 1/2 ID x 1 3/4"	20.5 OD x 11.4 ID x 4.5 cm
40219	Pediatric/ Neo-Natal	4 1/2 OD x 2 ID x 1"	11.4 OD x 5.1 ID x 2.5 cm
40201D	Adult with Center Dish	8 OD x 3 ID x 1 3/4"	20.5 OD x 7.5 ID x 4.5 cm
40202D	Pediatric with Center Dish	5 1/2 OD x 2 1/2 ID x 1 1/4"	14 OD x 6.4 ID x 3.2 cm
40203D	Neo-Natal with Center Dish	3 1/4 OD x 1 1/2 ID x 3/4"	8.3 OD x 3.8 ID x 2 cm



Horseshoe Head Pads

40204	Adult	8 OD x 3 ID x 1 3/4"	20.5 OD x 7.5 ID x 4.5 cm
40211	Adult, High	8 OD x 3 ID x 3"	20.5 OD x 7.5 ID x 7.5 cm
40205	Pediatric	5 1/2 OD x 2 1/4 ID x 1 1/4"	14 OD x 5.7 ID x 3.2 cm
40206	Neo-Natal	3 1/4 OD x 1 1/2 ID x 3/4"	8.3 OD x 3.8 ID x 2 cm
40220	Pediatric/ Neo-Natal	4 1/2 OD x 2 ID x 1"	11.4 OD x 5.1 ID x 2.5 cm



Ophthalmic Headrests

40209	Large	12 x 10 x 3 3/8"	31 x 25.4 x 10 cm
40210	Medium	12 x 10 x 2 7/8"	31 x 25.4 x 7.3 cm



Ophthalmic Cradle Headrests

40217	Adult	9 x 10 1/2 x 2 3/8"	23 x 26.7 x 6.7 cm
40217P	Pediatric	7 1/2 x 8 1/2 x 2 1/4"	19 x 21.6 x 5.7 cm

Head Pad with Center Dish

40207	9 x 10 x 1"	23 x 25 x 2.5 cm
40221	6 x 6 x 1"	15.2 x 15.2 x 2.5 cm



Supine Head Pad

40200	9 x 10 x 2 1/4"	23 x 25 x 5.7 cm
--------------	-----------------	------------------



Contoured Head Pad

40213	7 x 7 x 3 1/4" (1 1/2" contoured)	18 x 18 x 8 cm
--------------	-----------------------------------	----------------



Prone Headrests

40216M	Medium	8 3/4 x 7 3/4 x 4 3/4"	22.2 x 19.7 x 12 cm
40216L	Large	10 5/8 x 9 x 5 1/4"	27 x 22.0 x 13.4 cm



Resurfacing Kits V

Quick and easy resurfacing of minor cuts or abrasions on any polymer surface.

KIT002	4 x 4"	10 x 10 cm
KIT003	36 x 4"	91.4 x 10 cm

V - VALUE product essential for any operating room.



ARM / SHOULDER / ELBOW PADS



Shoulder Brace, 2-Piece Set

40302	5 x 6 x 1"	13 x 15 x 2.5 cm
--------------	------------	------------------



Hand/Wrist Support

40321	11 x 3 1/2 x 2 1/4"	28 x 9 x 5.7 cm
--------------	---------------------	-----------------



Arm/Hand Stabilizer Strap

40315	25 x 2 x 1/4"	63.5 x 5 x .635 cm
--------------	---------------	--------------------



Resurfacing Kits

Quick and easy resurfacing of minor cuts or abrasions on any polymer surface.

KIT002 4 x 4" 10 x 10 cm

KIT003 36 x 4" 91.4 x 10 cm

Armboard Pads

40300	Short	15 x 4 x 1/4"	38 x 10.2 x .6 cm
40301	Long	24 x 4 x 3/8"	61 x 10.2 x 1 cm
40309	Wide Short	15 x 6 1/2 x 1/4"	38 x 16.5 x .6 cm
40308	Wide Long	24 x 6 1/2 x 3/8"	61 x 16.5 x 1 cm



Contoured Armboard Pads

40307	Small	16 x 5 3/4 x 2 1/4"	41 x 14.6 x 5.7 cm
40310	Medium	20 x 5 3/4 x 2 1/4"	51 x 14.6 x 5.7 cm
40306	Large	24 x 5 3/4 x 2 1/4"	61 x 14.6 x 5.7 cm



Toboggan Pad

40130	Toboggan Pad	16 1/4 x 8 1/4 x 3/8"	41.3 x 21 x 1 cm
40312	Large Toboggan Pad	18 x 11 x 1/4"	44.7 x 27.9 x .6 cm
S40130*	Toboggan Pad Set	16 1/4 x 8 1/4 x 3/8"	41.3 x 21 x 1 cm
	Shield size =	15 1/4 x 18 1/4"	38.7 x 46.4 cm

*Warranty covers pad only.



Ulnar Nerve Protector

40304	Small	15 3/8 x 6 x 1/2"	40.3 x 15 x 1.3 cm
40304L	Large	19 x 8 1/2 x 1/2"	48 x 21.6 x 1.3 cm
40304P	Pediatric	10 x 3 x 1/4"	25.4 x 7.6 x .6 cm



Ulnar Forearm Protector

40303	18 x 13 x 1/4"	46 x 33 x .6 cm
--------------	----------------	-----------------



- VALUE product essential for any operating room.

For Coordinating Armboard Pads, please see page 6

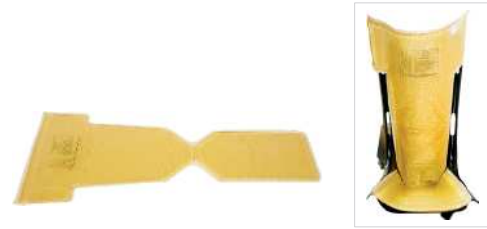
ANKLE / FOOT / HEEL / KNEE PADS



Stirrup Pad Sets

40501	Candy Cane (Set of 2)	28 x 2" OD	71 x 5 cm OD
40510	Ankle Strap Stirrup Pads, Small	12 1/2 x 1 3/4 x 3/8"	31.7 x 4.4 x 1 cm
40511	Ankle Strap Stirrup Pads, Large	17 3/8 x 1 7/8 x 3/8"	44.1 x 4.7 x 1 cm

Lithotomy holders not included.



Boot Stirrup Pad Set

40500	Universal	24 x 7 1/2 x 1/4"	61 x 19.1 x .6 cm
40503	SAM	22 1/2 x 13 x 1/4"	57.2 x 33 x .6 cm

Stirrup boot not included.



Fracture Table Foot Pad

40400	12 x 4 x 1/4"	30.5 x 10 x .6 cm
--------------	---------------	-------------------



Heel Protector Pad

40401	12 1/4 x 7 3/8 x 1/2"	32.7 x 20 x 1.3 cm
--------------	-----------------------	--------------------



Heel Comfort Cup Set

40520 (Set of 2)	4 1/4 x 3 3/8 x 1/2"	10.8 x 9.2 x 1.3 cm
-------------------------	----------------------	---------------------



Heel Support

40502	6 x 3 1/4" x 1 3/4"	15 x 8.3 x 4.5 cm
--------------	---------------------	-------------------



Knee Crutch Pads

40402	Small	11 x 9 x 3/8"	27.9 x 22.9 x 1 cm
40403	Medium	17 x 11 x 1/4"	43 x 27.9 x .6 cm
40404	Large	22 x 20 x 1/2"	56 x 50 x 1.3 cm

- VALUE product essential for any operating room.



POSITIONING CHEST ROLLS



Contoured Chest Rolls

40622	Small	12 x 6 1/4 x 5"	30.5 x 16 x 13 cm
40623	Medium	16 x 6 1/4 x 5"	40.6 x 16 x 13 cm
40624	Large	20 x 6 1/4 x 5"	50.8 x 16 x 13 cm



Chest Positioners

40625	Left	28 x 23 3/8 x 8 x 3 x 2 1/2"	71.1 x 59.4 x 20.3 x 7.6 x 6.4 cm
40626	Right	28 x 23 3/8 x 8 x 3 x 2 1/2"	71.1 x 59.4 x 20.3 x 7.6 x 6.4 cm



Roll Covers

40600	Chest Roll Cover	18 x 18 x 1/2"	46 x 46 x 1.3 cm
40601	Axillary Roll Cover	17 x 12 x 1/2"	43 x 30.5 x 1.3 cm



Chest Rolls

Adult			Pediatric	
40616	12 1/2 x 4 3/8 x 3 3/8"	31.8 x 11.1 x 8.6 cm	40639	6 x 2 x 2" 15 x 5 x 5 cm
40617	16 1/2 x 4 3/8 x 3 3/8"	41.9 x 11.1 x 8.6 cm	40640	8 x 2 x 2" 20 x 5 x 5 cm
40618	20 1/2 x 4 3/8 x 3 3/8"	52.1 x 11.1 x 8.6 cm	40641	10 x 2 x 2" 25.5 x 5 x 5 cm
40619	12 x 6 x 5"	30.5 x 15 x 13 cm	40642	12 x 2 x 2" 30.5 x 5 x 5 cm
40620	16 x 6 x 5"	40.6 x 15 x 13 cm	40643	6 x 3 x 3" 15 x 7.5 x 7.5 cm
40621	20 x 6 x 5"	50.8 x 15 x 13 cm	40644	8 x 3 x 3" 20 x 7.5 x 7.5 cm
			40645	10 x 3 x 3" 25.5 x 7.5 x 7.5 cm
			40646	12 x 3 x 3" 30.5 x 7.5 x 7.5 cm



Disposable Chest Roll Covers

The exclusive Action® soft 360 degree stretch film in a pillow sham design minimizes positioner exposure to fluids and pathogens. The covers also help prolong the life of the product. Purchase in cases of 25. Fits with corresponding chest roll.

- 40616DC
- 40617DC
- 40618DC
- 40619DC
- 40620DC
- 40621DC

Resurfacing Kits

Quick and easy resurfacing of minor cuts or abrasions on any polymer surface.

- KIT002** 4 x 4" 10 x 10 cm
- KIT003** 36 x 4" 91.4 x 10 cm



- VALUE product essential for any operating room.



Action® Positioning Strap

- Longest continuous Akton® polymer strap on the market
- Welded seams and 4-way stretch micro-resistant fabric
- Not made to restrain patient

40713	57 x 4 x ¼"	144.8 x 10.2 x .6 cm	Adjustable range: 28 x 43"	71.12 x 109.22 cm
40713L	90 x 4 x ¼"	228.6 x 10.2 x .6 cm	Adjustable range: 59½ x 79½"	151.13 x 201.93 cm



Trapezoid Positioner

40630	10 x 7 x 3½"	25.4 x 17.8 x 8.9 cm
--------------	--------------	----------------------



Dome-Shaped Positioner

40603	14 x 6 x 3"	36 x 15 x 7.6 cm
40603L	20 x 6 x 3"	50.8 x 15.2 x 7.6 cm



Lateral Positioner

40610	28 x 19.5 x 6/1"	71.1 x 49.5 x 15.2/2.5 cm
--------------	------------------	---------------------------

Patient Positioners

40602	Small	10 x 4 ¼ x 1 ⅝"	25.4 x 10.8 x 4.8 cm
40605	Large	14 x 4 x 2"	35.5 x 10.2 x 5 cm
40615	Extra Long	18 x 4 x 2"	46 x 10 x 5 cm



Graduated Thoracic Positioner

40604	14 x 9 x 2/1 ½"	36 x 23 x 5/3.8 cm
--------------	-----------------	--------------------

Orthopedic Hip Positioner

41740	16 x 8 ½ x 2.63"	40.64 x 21.56 x 6.68 cm
--------------	------------------	-------------------------



Vac-Pac® Covers

40612	Universal Vac-Pac® Cover	37 x 28 x ½"	94 x 71 x 1.3 cm
40612-31	Vac-Pac® Cover	38 ¾ x 35 ½ x ½"	98.4 x 90.2 x 1.3 cm
40613	T-Shaped Vac-Pac® Cover	34 x 15 x ½" bottom 23 x 9 x ½" top	86.5 x 38 x 1.3 cm bottom 58.5 x 23 x 1.3 cm top

Vac-Pac is a registered trademark of Olympic Medical.

- VALUE product essential for any operating room.



PEDIATRIC POSITIONERS

Over 80% of the top pediatric hospitals use Action® products to protect their patients.



NICU Pads

40120L	Isolette Pad	26 x 16 x 1/2"	66 x 40.6 x 1.3 cm
40120	Bassinnet Pad	26 x 12 x 1/2"	66 x 30.5 x 1.3 cm



Flat



Rolled

Pediatric Ulnar Nerve Protector

40304P	Pediatric	10 x 3 x 1/4"	25.4 x 7.6 x .6 cm
40304	Small	15 3/8 x 6 x 1/2"	40.3 x 15 x 1.3 cm



Pediatric Positioners

40648	6 x 1 1/2 x 3/4"	15 x 3.8 x 2 cm
40649	6 x 1 x 1"	15 x 2.5 x 2.5 cm
40650	6 x 1 1/2 x 1 1/2"	15 x 3.8 x 3.8 cm
40208	2 1/2 x 1 3/8 x 3/8"	6.3 x 4 x 1.6 cm



Pediatric Chest Rolls

40639	6 x 2 x 2"	15 x 5 x 5 cm
40640	8 x 2 x 2"	20 x 5 x 5 cm
40641	10 x 2 x 2"	25.5 x 5 x 5 cm
40642	12 x 2 x 2"	30.5 x 5 x 5 cm
40643	6 x 3 x 3"	15 x 7.5 x 7.5 cm
40644	8 x 3 x 3"	20 x 7.5 x 7.5 cm
40645	10 x 3 x 3"	25.5 x 7.5 x 7.5 cm
40646	12 x 3 x 3"	30.5 x 7.5 x 7.5 cm



Pediatric Positioner Set V

- Multi-purpose set protects neonates to toddlers during a wide variety of procedures
- Rectangular pad with indented channel allows chest expansion
- Pediatric Horseshoe Pad (40205) supports head in multiple positions
- Includes two different size Chest Rolls (40642 and 40646)

40614	Four piece pediatric positioning set	Includes: 40205, 40642, 40646, 40647	
40647	Rectangular Channel Pad	20 x 9 x 2"	50.8 x 22.9 x 5 cm



40202



40221



40217P

Pediatric Headrests

40202	Pediatric Donut Head Pad	5 1/2 OD x 2 1/4 ID x 1 1/4"	14 OD x 5.7 ID x 3.2 cm
40219	Pediatric/ Neo-Natal Donut Head Pad	4 OD x 2 ID x 1"	10.2 OD x 6.4 ID x 2.5 cm
40203	Neo-Natal Donut Head Pad	3 1/4 OD x 1 1/2 ID x 3/4"	8.3 OD x 3.8 ID x 2 cm
40202D	Pediatric Donut Head Pad with Center Dish	5 1/2 OD x 2 1/2 ID x 1 1/4"	14 OD x 6.4 ID x 3.2 cm
40203D	Neo-Natal Donut Head Pad with Center Dish	3 1/4 OD x 1 1/2 ID x 3/4"	8.3 OD x 3.8 ID x 2 cm
40205	Pediatric Horseshoe Head Pad	5 1/2 OD x 2 1/4 ID x 1 1/4"	14 OD x 5.7 ID x 3.2 cm
40220	Pediatric/ Neo-Natal Horseshoe Head Pad	4 1/2 OD x 2 ID x 1"	11.4 OD x 5.1 ID x 2.5 cm
40206	Neo-Natal Horseshoe Head Pad	3 1/4 OD x 1 1/2 ID x 3/4"	8.3 OD x 3.8 ID x 2 cm
40217P	Ophthalmic Cradle Headrests Pediatric	7 1/2 x 8 1/2 x 2 1/4"	19 x 21.6 x 5.7 cm
40221	Pediatric Head Pad with Center Dish	6 x 6 x 1"	15.2 x 15.2 x 2.5 cm

Universal Spot Protectors V



40405	Mini	1 3/4 OD x 1/4"	4.1 OD x .6 cm	Pkg of 12
40406	Small	3 1/4 OD x 1/4"	8.3 OD x .6 cm	Pkg of 12
40407	Large	5 1/2 OD x 1/4"	14 OD x .6 cm	Pkg of 6

V - VALUE product essential for any operating room.



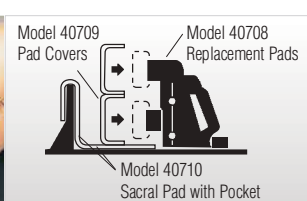
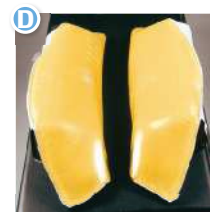
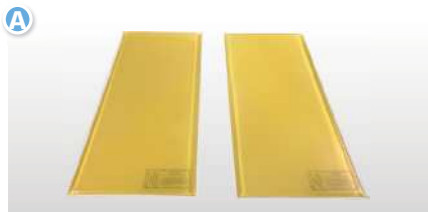
SPECIALTY FRAME PADS

Action® Specialty Frame Pads provide comfort and stability for highly specialized surgeries.

Shown in Photo: Wilson Frame, see below;
O.R. Overlay Small, p.3; Supine Head Pad, p.7;
Donut Head Pad, p.7; Chest Rolls, p.10



A	40701	Wilson Frame Pad, 2-Piece Set (½" Thick)	29 x 10 x ½"	74 x 25.4 x 1.3 cm
A	40702	Wilson Frame Pad, 2-Piece Set (1" Thick)	29 x 10 x 1"	74 x 25.4 x 2.5 cm
B	40705	Andrews Frame™ Knee Pad	23 x 16 ¼ x 1"	58.4 x 41.3 x 2.5 cm
B	40706	Andrews Frame™ Iliac Strap	24 x 6 x ¾"	61 x 15 x 1 cm
C	40110	Montreal Frame Pad	18 ¼ x 12 x ½"	46.3 x 30.5 x 1.3 cm
D	40712	Kambin Spinal Frame Pad Set	34 x 14 ¼ x 8 ⅝ x 10 ¾"	86.4 x 36.2 x 21.9 x 27.3 cm
E	40711	CF-94 Spinal Frame / CHOP	7 x 3 x ⅝"	17.8 x 7.6 x 1.6 cm
F	40700	Relton Frame Pad Set, 4-Piece Set	8 ⅜ x 7 ⅜ x 4 ⅜" OD; 6 ½ x 5 ⅜ x 3 ⅜ x ½" ID	21.1 x 18.6 x 10.5 cm OD; 16.5 x 14.1 x 8.7 x 1.3 cm ID
G	40703	Fracture Table Hip Pad (Rectangular)	8 x 5 ½ x ½"	20 x 14 x 1.3 cm
G	40707	Fracture Table Hip Pad (Contoured)	1 ¾" diameter hole	4.5 cm diameter hole
G	40704	Fracture Table Post Pad	7 x 5 x ½"	18 x 12.7 x 1.3 cm
H	40708	Universal Lateral Positioner Iliac Crest Pad Set	3 ⅜ x 3 ⅜ x 1 ⅜" OD; 2 ⅜ x 2 ⅜ x 1 ⅜" ID	7.9 x 8.7 x 4.8 cm OD; 5.4 x 5.9 x 3.3 cm ID
H	40709	Universal Lateral Positioner Frame Pad Cover Set	4 ⅜ x 4 ½ x 2 ½" OD; 3 x 3 ½ x 1 ⅜" ID	10.3 x 11.4 x 6.4 cm OD; 7.6 x 8.9 x 4.8 cm ID
H	40710	Universal Lateral Positioner Hip/Sacral Pad	26 x 10 ½ x ½"	66 x 26.7 x 1.3 cm
I	40719	Peg Board and Post Pad Set	Set includes 40100, 4- 40719A, 4- 40719B	
I	40719A	Short Post Pad	5 x 5 ½ x 5"	12.7 x 14 x 12.7 cm
I	40719B	Tall Post Pad	5 x 8 ½ x 5"	12.7 x 21.6 x 12.7 cm
I	40100	Medium Overlay	46 x 20 x ½"	117 x 50 x 1.3 cm



"Positioning equipment should be used in a safe manner and according to manufacturer's written instructions."

2015 Perioperative Standards and Recommended Practices. RP: Positioning the Patient, AORN, Inc.





ESSENTIAL VALUE PRODUCTS

If your O.R. could have nothing else- consider these basic, versatile products...

Donut Head Pads



40201	Adult	8 OD x 3 ID x 1 3/4"	20.5 OD x 7.5 ID x 4.5 cm
40212	Adult, High	8 OD x 3 ID x 3"	20.5 OD x 7.5 ID x 7.5 cm
40202	Pediatric	5 1/2 OD x 2 1/4 ID x 1 1/4"	14 OD x 5.7 ID x 3.2 cm
40203	Neo-Natal	3 1/4 OD x 1 1/2 ID x 3/4"	8.3 OD x 3.8 ID x 2 cm
40218	Adult, Wide	8 OD x 4 1/2 ID x 1 3/4"	20.5 OD x 11.4 ID x 4.5 cm
40219	Pediatric/ Neo-Natal	4 1/2 OD x 2 ID x 1"	11.4 OD x 5.1 ID x 2.5 cm
40201D	Adult with Center Dish	8 OD x 3 ID x 1 3/4"	20.5 OD x 7.5 ID x 4.5 cm
40202D	Pediatric with Center Dish	5 1/2 OD x 2 1/2 ID x 1 1/4"	14 OD x 6.4 ID x 3.2 cm
40203D	Neo-Natal with Center Dish	3 1/4 OD x 1 1/2 ID x 3/4"	8.3 OD x 3.8 ID x 2 cm



Overlays

40105	Small	20 x 20 x 1/2"	50.8 x 50.8 x 1.3 cm
40100	Medium	46 x 20 x 1/2"	117 x 50 x 1.3 cm
40101	Full Length	72 x 20 x 1/2"	183 x 50 x 1.3 cm

Ulnar Nerve Protector



40304	Small	15 3/4 x 6 x 1/2"	40 x 15 x 1.3 cm
40304L	Large	19 x 8 1/2 x 1/2"	48 x 21.6 x 1.3 cm
40304P	Pediatric	10 x 3 x 1/4"	25.4 x 7.6 x .6 cm



Knee Crutch Pads

40402	Small	11 x 9 x 3/8"	27.9 x 22.9 x 1 cm
40403	Medium	17 x 11 x 1/4"	43 x 27.9 x .6 cm
40404	Large	22 x 20 x 1/2"	56 x 50 x 1.3 cm

Patient Positioners



40602	Small	10 x 4 1/4 x 1 3/8"	25.4 x 10.8 x 4.8 cm
40605	Large	14 x 4 x 2"	35.5 x 10.2 x 5 cm
40615	Extra Long	18 x 4 x 2"	46 x 10 x 5 cm

Heel Support

40502	6 x 3 1/4" x 1 3/4"	15 x 8.3 x 4.5 cm
--------------	---------------------	-------------------



Armboard Pads

40300	Short	15 x 4 x 1/4"	38 x 10.2 x .6 cm
40301	Long	24 x 4 x 3/8"	61 x 10.2 x 1 cm
40309	Wide Short	15 x 6 1/2 x 1/4"	38 x 16.5 x .6 cm
40308	Wide Long	24 x 6 1/2 x 3/8"	61 x 16.5 x 1 cm

Universal Spot Protectors

40405	Mini	1 5/8 OD x 1/4"	4.1 OD x .6 cm	Pkg of 12
40406	Small	3 1/4 OD x 1/4"	8.3 OD x .6 cm	Pkg of 12
40407	Large	5 1/2 OD x 1/4"	14 OD x .6 cm	Pkg of 6





Stirrup Pad Sets

40501	Candy Cane (Set of 2)	28 x 2" OD	71 x 5 cm OD
40510	Ankle Strap Stirrup Pads, Small	12 1/2 x 1 3/4 x 3/8"	31.7 x 4.4 x 1 cm
40511	Ankle Strap Stirrup Pads, Large	17 3/8 x 1 1/2 x 3/8"	44.1 x 4.7 x 1 cm

Lithotomy holders not included.



Original Series and Original FT Series

See page 5 for details.



Models	2 3/8" Original FT-	3 3/8" Original FT-	2 3/8" Original	3 3/8" Original
	3-pc. Set	3-pc. Set	3-pc. Set	3-pc. Set
Berchtold B710, B810	75920	77920	70920	72920
Skytron 3100	75340	77340	70340	72340
Skytron 3500	75310	77310	70310	72310
Skytron 3501, 3600, 3600B	75370	77370	70370	72370
Skytron 6300, 6302	75350	77350	70350	72350
Skytron 5001, 6001, 6002, 6500 & 6600	75320	77320	70320	72320
Skytron 6700, 6701	75330	77330	70330	72330
Amsco 1080, 2080	75110	77110	70110	72110
Amsco 3080, 3085	75120	77120	70120	72120
Steris C-Max, 4085, 5085	75140	77140	70140	72140



Pediatric Positioner Set

40614 The set includes:

40205	Horseshoe Head Pad	5 1/2 OD x 2 1/4 ID x 1 1/4"	14 OD x 5.7 ID x 3.2 cm
40642	Chest Roll	12 x 2"	30.5 x 5 cm
40646	Chest Roll	12 x 3"	30.5 x 7.5 cm
40647	Rectangular Channel Pad	20 x 9 x 2"	50.8 x 22.9 x 5 cm



Resurfacing Kits

Quick and easy resurfacing of minor cuts or abrasions on any polymer surface.

KIT002 4 x 4" 10 x 10 cm

KIT003 36 x 4" 91.4 x 10 cm



Making A Material Difference®

Product Warranty

Action Products warrants its standard line of Action® Operating Room Pads and Positioners for two years for defects in materials and workmanship at the time of purchase with the exception of products that are obsolete, misused, abused, altered, damaged, specialty or custom manufactured. Accessory and disposable items are warranted to be free of defective materials and workmanship at the time of initial purchase only.

Custom Pads And Positioners Are Our Specialty

Please call and email/fax a diagram with your specific requirements. All pads and positioners are imaging compatible and easily disinfected.

Product Returns

All product returns must be pre-authorized by a Customer Service Representative who will issue a unique RMA (Return Merchandise Authorization) number. Customer must supply order number and reason for return information. Returns are subject to a 20% restocking fee unless related to a manufacturing defect, product recall, product withdrawal, product correction or Customer Service error. *Action Products will not accept order cancellations or returns of custom manufactured items.*

The RMA number must accompany the returned item(s) and be clearly marked on the outside of the return shipping carton.

Action Products requires a [Certificate of Disinfection](#) be completed and submitted for all returns.

General Terms

(Please note contracted terms may differ slightly) New accounts subject to credit approval. Standard credit terms are 2% 10, Net 30 on merchandise only, allowing for a 2% cash discount for payment within 10 days of invoice date. Cash payments are defined as cash, check or electronic funds transfer, and do not include credit card purchases. We accept Visa®, MasterCard®, and American Express®. Standard domestic shipments are made by our preferred carrier, UPS, FOB Action Products, prepaid and added. Handling and drop-ship fees may apply.



Action Products, Inc.

954 Sweeney Drive
Hagerstown, MD 21740, USA

Customer Service:

Monday - Friday: 8:30am to 5:00pm EST

800.228.7763 or 301.797.1414

Fax 301.733.2073

service@actionproducts.com

www.actionproducts.com



ACTION, AKTON, SHEAR SMART, BODY SMART and Making A Material Difference are registered trademarks of Action Products, Inc. USA Andrews Frame is a trademark of Orthopedic Systems, Inc. Vac-Pac is a registered trademark of Olympic Medical.

Position of model is intended to display pads and may not be surgically correct in every case. All product sizes are subject to change slightly.

